



MacroBin® 16-24 NG FV Series



MACROBIN FAMILY

Our next generation MacroBin 16-24 has undergone an upgrade using the latest in design innovations to make a superior bin with features that far outperform other bins on the market. The 16-24NG FV features newly engineered reinforced columns and feet that improve impact resistance and reduce damage during tough harvests.



The MacroBin 16-NG FV with shallower depth is perfect for tender fruits and vegetables.

Features

100% stack compatibility with previous generation MacroBin 16-24. The next generation meets the same specifications as the previous model with improved features and benefits.

New design technology improves column strength allowing them to act as bumpers, absorbing and recoiling on impact to prevent breakage. Greatly increasing the bin's durability.

Innovative geometry creates a "bruise buffer zone" and reduces the bulging of side walls so produce will not suffer from side impact.

Lightweight construction reduces shipping costs and makes MacroBins easier to move; their interlocking foot design make them safer to stack.

Nonporous surfaces won't absorb water or dehydrate your product like wood bins, and they provide a constant tare weight throughout their use.

Rounded corners and smoother surfaces mean fewer scuffs, abrasions, and cuts on your product. Risk of contamination is reduced because there are fewer places for unwanted particles to hide.

Increased ventilation slots in the sides and base facilitate the use of thermofogging, reduce heat absorption and cooling costs, and provide for quicker drying and degreening.

Easy-to-sanitize MacroBins keep cleaning costs to a minimum. A high-pressure wash removes most debris; a nonabrasive brush can dislodge any remaining items.

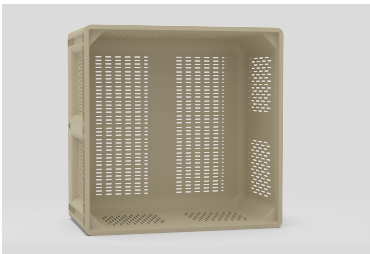
MacroBin® 16-24 NG FV Series

800-845-6555
www.iplglobal.com

Benefits of Using MacroBins



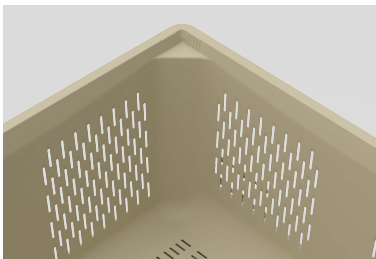
Increased productivity
Lightweight MacroBins are easy to handle, move, and transport. The unique interlocking foot design makes them easy to align and stack.



Reduced cooling costs
Hundreds of vents in the sides and base promote air flow, make the environment less conducive to pathogen growth, and help your products stay cool.



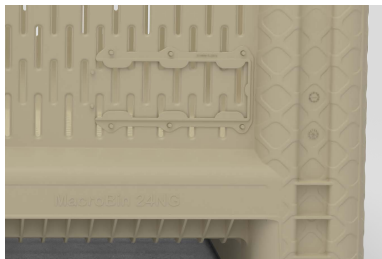
Reduced bin repair costs
MacroBins are virtually maintenance free; repairs are easy with hot air welding.



Better sanitation and reduced contamination
Smooth, nonporous surfaces are easy to sanitize and won't trap debris, breed bacteria, or absorb chemicals like wood bins.



Improved pack out Rounded corners and smooth surfaces mean fewer scuffs, abrasions, and cuts on your product.



Improved traceability and bin security
Several identification methods including RFID tags and attractive foil embossing are available.

MacroBin 24-NG FV Specifications

Load Capacity	1,200 lbs / 544.31 kgs
Volume Capacity	40,700 cu. in / 666.95 liters
Tare Weight	72 lbs / 32.7 kgs
Maximum Stack Weight ¹	8,500 lbs / 3855.5 kgs (long term, ambient temp.) 10,000 lbs / 4535.9 kgs [short term (<1 month), ambient temp.] 11,500 lbs / 5216.3 kgs [long term, cold storage (0° F to 35° F) ²]
Molding Process	High-pressure injection molding
Material	Polypropylene, U.V. stabilized
Approval	FDA-regulated material
Foot Design	Two full-length feet with positive interlocking feature
Fork Lift Entry	2 way: 4 3/4" (107.95 mm) opening
External Dimensions	47.125" (L) x 47.125" (W) x 28.244" (H) 1196.98 mm x 1196.98 mm x 717.39 mm
Internal Dimensions	44.953" (L) x 44.953" (W) x 21.838" (H) 1141.80 mm x 1141.80 mm x 554.67 mm
Options	Rotator Bar, MacroLid, Center foot for added floor support, wide or narrow vented base

Notes
Dimensions assume tolerance of 1/4". Volume capacities assume tolerance of 5% and tare weights assume a tolerance of 4% unless noted otherwise. Ambient temperature approximately equal to 75° F. Data is subject to change.

1 Stack Weight = (weight of bin contents + tare weight of bin) X number of bins in stack

2 Please contact Macro if storage temperature is below 0° F.

Please refer to the appropriate User Guide for information on the safe transportation, stacking and handling of Macro products. The User Guides in PDF format are available, call us at 800.845.6555.

MacroBin 16-NG FV Specifications

similar to 24-NG FV except:

Load Capacity	1,200 lbs / 544.31 kgs
Volume Capacity	27,700 cu. in / 453.92 liters
Tare Weight	65 lbs / 29.5 kgs
External Dimensions	47.125" (L) x 47.125" (W) x 21.619" (H) 1196.98 mm x 1196.98 mm x 549.11 mm
Internal Dimension	44.953" (L) x 44.953" (W) x 15.213" (H) 1141.80 mm x 1141.80 mm x 386.40 mm